



CITIZENS HEALTH EDUCATION AND  
DEVELOPMENT INITIATIVE (CHEDI)

ORGANIZATIONAL PROFILE

Citizens' Health Education and Development Initiative (CHEDI) is a non-profit organization founded in 2011 and legally registered in 2012 with Corporate Affairs Commission (**CAC/IT/N0 55445**) in Nigeria. CHEDI was established as reaction to observations made bothering on inadequate information on preventive healthcare; especially of communicable diseases like (Malaria, HIV, Tuberculosis) and non-communicable diseases such as (cancer, hypertension, diabetes, malnutrition), vulnerable populations especially women, children and people living with disabilities in Nigeria.

**Vision:** A Nigeria where citizens' health is advanced through Education and Awareness to achieve a healthy and productive workforce.

**Mission:** Our mission is to improve the quality of life of communities by empowering citizens with the right knowledge and skills to take responsibility for their well-being.

**Goal:** To contribute towards a healthy and productive nation by engaging in advocacy, capacity building, and empowerment of the citizenry especially the vulnerable and marginalized.

CHEDI is committed to improving access to healthy living of the citizenry through advocacy/sensitization, capacity building and partnerships/collaboration.

## **OUR THEMATIC AREAS**

- **Health advocacy and services**

(Nutrition, MNCH, immunization, HIV/AIDS prevention, SRH, Adolescent SRH, renovation of health facilities)

- **Economic and Social Empowerment**

(Skills and vocational development, house-hold economic empowerment, Village Savings and Loans Association)

- **Development Research**

(Perception surveys, desk review, literature reviews, agenda development)

- **Capacity Development**

(Trainings, youth empowerment, public campaigns and advocacy)

## Strategies

- ♣ Advocacy
- ♣ Participatory research and documentation
- ♣ Community engagements
- ♣ Collaboration and Networking/co-creation
- ♣ Capacity Building

## **Our Core Values:**

- Integrity

Our word is our bond

- Accountability

We are accountable to the communities we serve and our partners.

- Transparency

Openness and honesty is our culture

- Equality

Zero tolerance for discrimination of whatever form

- Professionalism

Our team is well experienced and skilled

- Excellence

We settle for nothing but the best

- Partnership

We work within a community of like-minded entities.

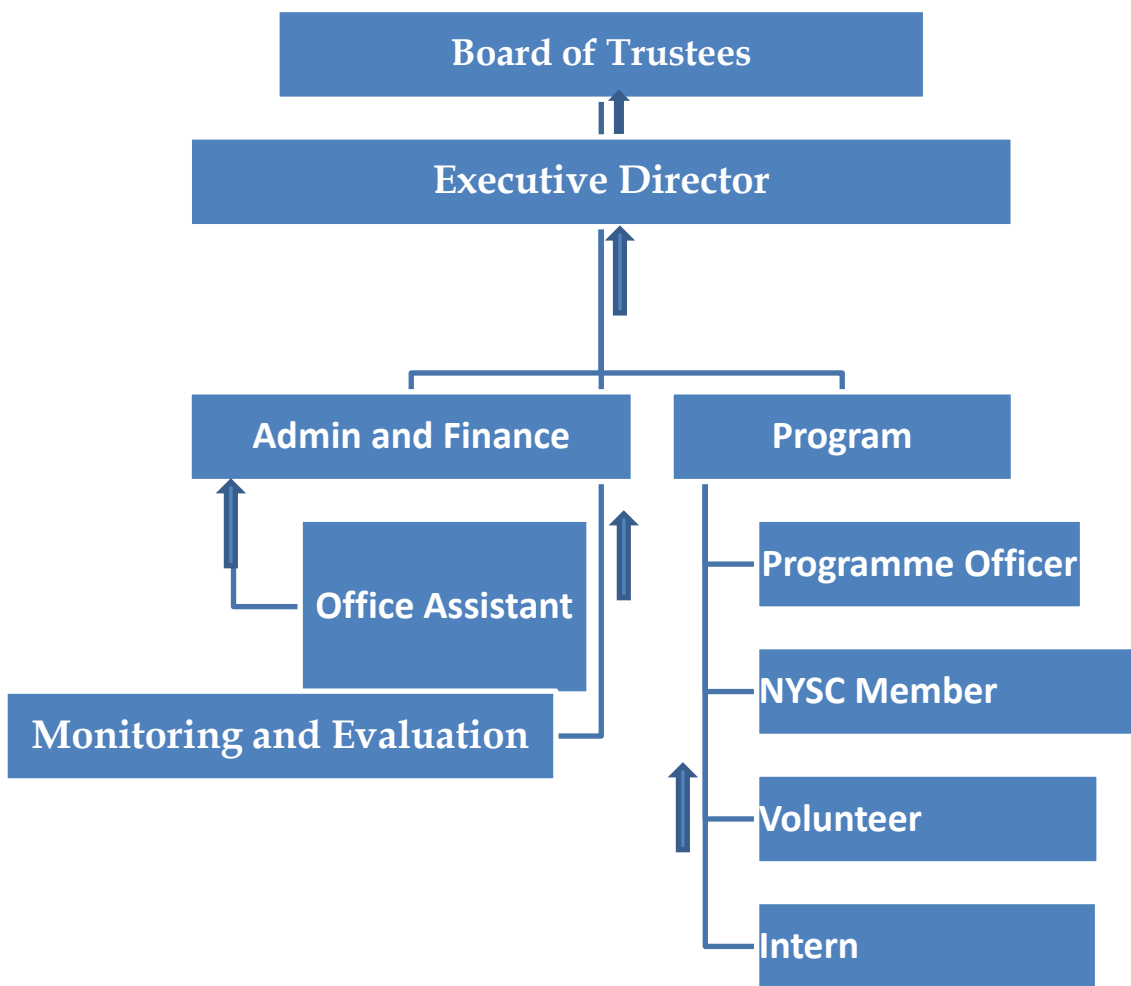
- Passion

Team members approach their work with shared enthusiasm.

## Organizational Structure

- ♣ **Board members:** CHEDI is governed by a Board of Trustees made up of eminent Nigerians from various walks of life.
- ♣ **Management:** The daily activities of CHEDI are run by a team of committed and experienced staff led by the Executive Director.
- ♣ **Staff strength:** Currently, the CHEDI team is made up of 6 full time and 4 part-time staff
- ♣ CHEDI works with volunteers in all project locations. These volunteers are managed by our community engagement officer.
- ♣ CHEDI operates a cooperate account in a reputable bank.

### ORGANOGRAM



Tab 1: List of Previous Successfully Completed and on-going Programs

<b>PROJECT/DESCRIPTION</b>	<b>DONOR/PARTNER</b>	<b>DATE</b>	<b>ACHIEVEMENT</b>
<b>Global Fund NFM Community-led Monitoring</b> (a community-based malaria advocacy and accountability project for GF supported PHCs and communities)	<b>Funder:</b> Global Fund <b>Principal Recipient:</b> Catholic Relief Services (CRS) <b>Sub-recipient:</b> Civil Society in Malaria, Immunization and Nutrition, ACOMIN	Ongoing	CHEDI reached over 2000 women, children and the general population with information on malaria prevention methods and resolved at least 50 service-related issues identified through Client Exit Interviews (CEI), Key Informant Interviews, (KII) and Focus Group Discussion (FGD)
<b>Accelerated Nutrition Result Project in Nigeria (Abia State)</b>	World Bank Staff	Ongoing	CHEDI empowered 100 Vulnerable Women and Girls from FCT and Nasarawa States economically. 100 Grinding Machines, accessories and startup funds were distributed to beneficiaries.
<b>Skill acquisition program for indigent women in Imo State</b>	<b>CHEDI BoT</b>	January 2023	CHEDI developed the skills of 20 Women in Oboama Ezinihitte Mbaise Imo State on the production and packaging of liquid soap, body cream, stain removal and soya milk for 2 days.
<b>Accelerated Nutrition Result Project in Nigeria</b>	World Bank Staff for their Community Connection Campaign, FY 2021	Ongoing	CHEDI empowered 60 Vulnerable Women and Girls from FCT and Nasarawa States economically. 60 Grinding Machines, accessories and startup funds were distributed to beneficiaries.
<b>COVID19 Palliative Support for vulnerable households in Imo State Nigeria</b>	AIDS Healthcare Foundation (AHF), Los Angeles USA	2020	250 vulnerable households in Oboama Ezinihitte Mbaise and 150 in Achi Mbieri Mbaitoli Imo State were sensitized and provided with food as palliatives against Covid19
<b>World Bank FY 2020</b>	World Bank Staff under the Community Connection Project	2020	CHEDI carried out renovation/remodeling of Kuchiko PHC in Bwari Area Council, FCT Abuja. Hospital equipment, generator, solar lighting, boreholes were provided PHC through the project.

<b>Community-led Monitoring and Advocacy</b>	<b>Funder:</b> Global Fund <b>Principal Recipient:</b> Catholic Relief Services (CRS) <b>Sub-recipient:</b> Civil Society in Malaria, Immunization and Nutrition, ACOMIN	2018-2020	CHEDI reached over 2000 women, children and the general population with information on malaria prevention methods and resolved at least 50 service-related issues identified through Client Exit Interviews (CEI), Key informant Interviews, (KII) and Focus Group Discussion (FGD)
<b>Maternal and Newborn Week commemoration</b>	WHO and Civil Society Scale-up Nutrition in Nigeria (CS-SUNN) Abuja Chapter	2019	In collaboration with other stakeholders, CHEDI sensitized 500 women in Gwagwa Karimo Districts in Abuja on the importance of Antenatal Care, Routine Immunization for themselves and their babies, the benefits of hospital deliveries and Family Planning.
<b>Monitoring of measles Immunization</b>	FCT Health Management Board and WHO	2019	CHEDI monitored Measles Immunization in Wuye, Gwarinpa and Mpape Districts, in AMAC. One of the key deliverables of this exercise was ensuring that all target beneficiaries get the immunized within the stipulated time
<b>World Bank FY2019 Project</b>	World Bank Staff through their FY2019 Community Connection Campaign	2019	The project produced the following outputs: i. 60 women were empowered with skills and startup funds for small businesses ii. at least 50 people were reached with HIV voluntary counselling and testing iii. There was a Community Nutrition and Food Demonstration session in Gbagalape, AMAC, FCT. Iv. Hospital Equipment and solar lighting points were provided to 4 Primary Healthcare Centres (PHCs) in the FCT and 2 PHCs in Nasarawa State.
<b>National AIDS Impact Indicator Survey (NAIIS)</b>	International Human Virology Nigeria (IHVN), USAID, University of Maryland School of Medicine and National Agency for the Control of AIDS (NACA).	2018/2019	CHEDI supported and actively participated in the National AIDS Impact Indicator Survey (NAIIS).

<b>Supplementation of Vitamin A, deworming and distribution of multi-vitamins in Imo State</b>	Vitamin Angels	2015/2019	CHEDI carried out supplementation of Vitamin A, deworming and distribution of multi-vitamins pregnant women and nursing mothers. Also, at least 100 children (6 to 59) months were dewormed at Aboh Mbaise, LGA Imo State.
<b>FY 2018</b>	In collaboration with World Bank Staff for their FY2018 Community Connection Campaign	2018	<ul style="list-style-type: none"> <li>• At least 60 women were empowered with skills</li> <li>• At least 100 women and men benefitted from HIV voluntary counselling and Testing Services</li> <li>• At least 300 community members were reached with nutritional information during the Community Nutrition and Food Demonstration in Durumi District Abuja Municipal Area Council, Abuja</li> </ul>
<b>GF/NFM community mobilization against Malaria</b>	ACOMIN with grant from GF	2015-2017	Social Mobilization activities on Malaria New Funding Model Global Fund through Interpersonal Conductors (IPC) with grant from Global Fund in Nigeria. Aboh Mbaise Imo State.
<b>Grant Assistance for Grassroots and Human Security Project (GGP)</b>	Japanese Embassy Nigeria.	2016-2017	<ul style="list-style-type: none"> <li>• Constructed and Equipped a Primary Healthcare Centre powered by Solar,</li> <li>• Sunk a borehole and installed a manual pump in Shere Koko in Bwari Area Council FCT</li> </ul>
<b>Strengthening HIV Prevention and Support</b>	AIDS Healthcare Foundation (AHF), Los Angeles USA.	2016-2017	<ul style="list-style-type: none"> <li>• 50 female sex workers were empowered with skills and startup funds in the FCT (Mpape, AMAC and their environs) and in Nasarawa (Karu, Masaka) and their environs.</li> </ul>
Research on Transcription Report of Data Monitoring Intervention on Performance and Accountability in Nigeria's Routine Immunization Program in Niger State.	International Vaccine Access Centre (IVAC) John Hopkins University Baltimore, USA	2015	Conducted desk review and data analysis on the performance and accountability in the implementation of RI programmes in Niger State.
<b>Impact Assessment on Ward Development Committee (WDC), Niger State</b>	International Vaccine Access Centre (IVAC) John Hopkins University Baltimore, USA	2014	Conducted research on Impact of the project on Ward Development Committee (WDC) in 3 Local Government Areas (Kutigi, Chachangi and Wushishi), Niger State. The research

			was to assess the impact of Ward Development Projects setup by the State Government.
<b>Support for OVCs in Nasarawa State</b>	Excellence and Friends Management Consult (E&FMC)	2013	220 vulnerable children were supported with tuition fees and educational materials i.e., school bags and shoes in Keffi and Akwanga, Nasarawa State
<b>HIV/AIDS community awareness campaign and support</b>	BoT in partnership with E & FMC, SFH and Sweet Mother Int'l	2013	<ul style="list-style-type: none"> <li>• Mobilized and sensitized 3 communities of Mararaba in Karu LGA, Nasarawa State on HIV prevention.</li> <li>• Conducted HIV voluntary counseling and testing for 800 men, women and youths.</li> <li>• Distributed 1000 condoms and 500 Reproduction Health kits to PHCs to support safe delivery</li> </ul>
<b>Sensitization workshop on SGBV, Teenage Pregnancy and HIV/AIDS</b>	CHEDI BoT, in partnership with 7UP bottling company and Dufil Prima Food	2012	<p>Organized a 2-days Sensitization Workshop on Sexual Violence, Gender Based Violence, Teenage Pregnancy and HIV/AIDS for Secondary School Students in FCT, Abuja.</p> <p>Output: 250 students, 50 parents, 70 teachers and 15 media personnel were reached with important information on GBV</p>
<b>Community sensitization on malaria prevention and control</b>	Federal Ministry of Health (FMOH) Malaria Control Office	2012-2013	<p>Mobilized and Sensitized communities on Malaria Prevention and Control targeting antenatal and breastfeeding mothers and Traditional Birth Attendants in Umuekwere-Oboama, Mbaise Imo State and Byahzin in Bwari Area Council Abuja FCT.</p> <p>500 Insecticide Treated nets were distributed also distributed during this campaign</p>



<b>World Diabetes Day 2012</b>	CHEDI in collaboration with FCT Primary Healthcare Development Board (FCTB)	2012	CHEDI commemorated the 2012 WDD with awareness on Screening for Diabetes and Hypertension with emphasis on prevention. Community members were also sensitized on the importance of good nutrition, the linkage of nutrition and non-communicable diseases especially on diabetes and hypertension
--------------------------------	---	------	---

## *OUR PARTNERS*

- AIDS Healthcare Foundation (AHF)
- Federal Ministry of Health (FMOH)
- Federal Capital Territory Agency for the Control of HIV/AIDS (FACA)
- International Vaccine Access Centre (IVAC)
- National Agency for the Control of AIDS (NACA)
- Japanese Embassy in Nigeria
- Civil Society in Malaria Control Immunization and Nutrition (ACOMIN)
- Civil Society for HIV/AIDS in Nigeria (CiSHAN)
- Society for Family Health (SFH)
- Sweet Mother International
- Excellent and Friends Management Consult (E & FMC)
- United Nations Population Fund (UNFPA)
- Women Advocates for Vaccine Access (WAVA)
- World Bank Staff
- Vitamin Angels

## **COALITIONS WHERE CHEDI HAS MEMBERSHIP**

- Association of Civil Society in Malaria Control, Immunization and Nutrition (ACOMIN)
- Civil Society on HIV/AIDS in Nigeria (CiSHAN)
- Civil Society Coalition on Cancers in Nigeria (CISCOCIN)
- Civil Society Scaling-Up Nutrition in Nigeria (CS-SUNN)

## **We are also registered with:**

- EFCC/SCUML (Special Control Unit Against Money Laundering)
- Federal Ministry of Budget and Economic Planning
- Federal Ministry of Women Affairs.
- State Ministry of Women Affairs and Social Development, Imo State
- Federal Ministry of Health Social Development
- Federal Capital Territory Administration (FCTA)
- Primary Health Care Board, FCT

## CONTACT US

**Head Office Suite 3, Yasuha Plaza, Adetokunbo Ademola Crescent, Wuse II, Abuja-FCT, Nigeria.**

**Emails:** [info@cheding.org](mailto:info@cheding.org); [saenyioha@hotmail.com](mailto:saenyioha@hotmail.com);

**Website:** [www.cheding.org](http://www.cheding.org).

**Facebook:** Chedi NGO

**Phone numbers** +234-803 700 0617; +234 818 979 5361

**Imo State Office:** IG Plaza, 2nd Floor, Aboh Junction, Oboama Ezinihitte, Imo State  
+234-803-700-0617; +234-805-565-7266; 0803 076 7421.

**Nasarawa Office:** Wing B Ecowas Plaza By Double Pole Bust Stop New Yanyan, Karu LGA Nasarawa State. Mobile Nos: +234-803-700-0617, +234-818-979-5361

**Niger State Office** Suite 12 A, A Soje Plaza, Lapai- Minna Road, Lapai, Niger State.  
+234-803-700-0617, +234-818-979-5361, 0803 501 9407.